

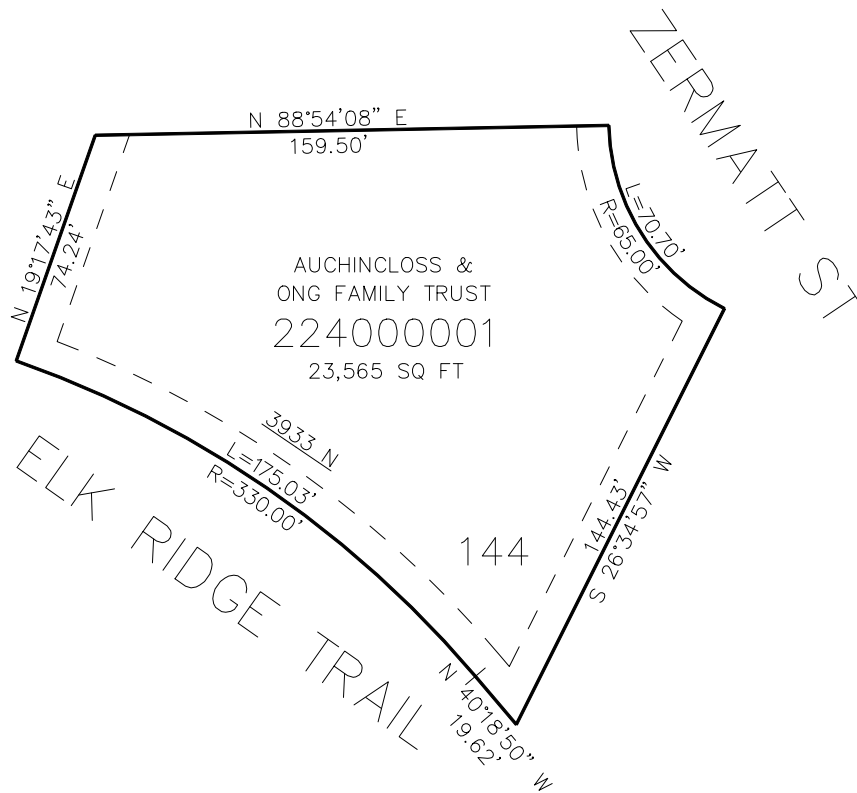
PART OF THE W.1/2, OF SECTION 23, T.7N., R.1E., S.L.B. & M.  
THE HIGHLANDS AT WOLF CREEK PH 4 1ST AMENDMENT

IN WEBER COUNTY  
SCALE 1" = 30'

TAXING UNIT: 203

SEE PAGE 219

SEE PAGE 219



SEE PAGE 219

SEE PAGE 219

10' UTILITY & DRAINAGE EASEMENTS EACH  
SIDE OF PROPERTY LINES AS INDICATED  
BY DASHED LINES EXCEPT AS OTHERWISE  
SHOWN.

FOR COMPLETE ENC DATA SEE  
ORIGINAL DEDICATION PLAT IN  
BOOK 91, PAGE 58 OF RECORDS.